

ARTISANAL SMOKED MEATS HANDCRAFTED IN SMALL BATCHES

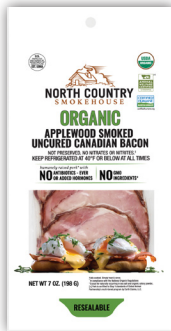


certifiedhumane.org



NORTH COUNTRY SMOKEHOUSE

ORGANIC APPLEWOOD SMOKED UNCURED CANADIAN BACON



Our Organic Uncured Applewood Smoked Canadian Bacon starts as a lean pork that is carefully selected from Canadian family farms and hand-trimmed by our butchers to exacting specifications. The meat is marinated in a maple syrup brine, and double smoked to create a hearty bacon that is more boldly flavorful than you'd expect. This variety is free from GMO's, antibiotics, added growth hormones, nitrates, nitrites, and animal byproducts. The pork is vegetarian-fed.

INGREDIENTS	ORGANIC PORK LOIN, WATER, SEA SALT, ORGANIC TURBINADO SUGAR, ORGANIC VINEGAR, CULTURED ONION POWDER (ONION POWDER, SEA SALT), ORGANIC MAPLE SYRUP, ORGANIC CULTURED CELERY POWDER (ORGANIC CELERY POWDER, SEA SALT).
PRODUCT CODE	27107
UPC CODE	791545271078
PRODUCT SIZE	7 OZ
CASE COUNT	12 PER CASE
NET WEIGHT	5.25 LBS
FRESH / FROZEN	FRESH
BOX DIMENSION	14.25" x 11.5" x 5.125"
CUBE	.49
PALLET COUNT	130
TI / HI	13 LAYERS OF 10 BOXES
SHELF LIFE	90 DAYS FRESH / 1 YEAR FROZEN

RELENTLESS FLAVOR. EXCEPTIONAL ANIMAL CARE. RESPECT FOR THE LAND.

NO GMO INGREDIENTS

PORK RAISED WITH:
 NO ANTIBIOTICS-EVER

PORK RAISED WITH:
 NO ADDED HORMONES

NO NITRATES OR NITRITES

Proudly Made in New England by North Country Smokehouse, Claremont, New Hampshire
Phone: 603-543-0234 | Toll-Free: 800-258-4303 | E-mail: orders@ncsmokehouse.com



100g Nutritional Values

Parameter	Value:		Value 1.00/oz
Moisture	67.23	gm/100gm	19.06gm
Protein	22.00	gm/100gm	6.24gm
Total Fat	7.18	gm/100gm	2.04gm
Calories from Fat	64.62	cal/100gm	18.32cal
Ash	3.33	gm/100gm	0.94gm
Calories	153.66	cal/100gm	43.56cal
Carbohydrates	0.26	gm/100gm	0.07gm
Calcium	5.00	mg/100gm	1.42mg
Sodium	1,019.00	mg/100gm	288.89mg
Vitamin D	0.00	IU/100gm	0.00IU
Potassium	373.00	mg/100gm	105.75mg
Iron	0.56	mg/100gm	0.16mg
Saturated Fat	2.90	gm/100gm	0.82gm
Monounsaturated Fat	3.10	gm/100gm	0.88gm
Polyunsaturated Fat	1.10	gm/100gm	0.31gm
Trans Fat	0.00	gm/100gm	0.00gm
Cholesterol	38.00	mg/100gm	10.77mg
Total Dietary Fiber	0.00	gm/100gm	0.00gm
Sugars	1.06	gm/100gm	0.30gm

gm=grams, mg=miligrams, IU=International Units, <=Less Than

Values on this report are actual analytical results. Label declarations may require rounding or conversion to % Daily Value or serving size



North Country Smokehouse holds the SQF Quality Shield, awarded by the The Safe Quality Food Institute (SQFI), a universal, farm-to-fork safety & compliance program recognized by the Global Food Safety Initiative.



Microbiological Properties

Parameter	Value
Standard Plate Count /g	<40,000*
Total Coliforms MPN /g	<50
E. Coli MPN /g	<10
Coag. + Staph MPN /g	<10
Yeast /g	<500*
Mold /g	<200*
Lactic Acid Bacteria /g	<500*
Salmonella species /g	Negative
Listeria Species /25g	Negative

*estimated count, <less than, > greater than

Nutritional Values per Serving

Nutrition Facts

3.5 Servings Per Container
Serving Size 2oz (56g)

Amount per serving **90**

Calories

% Daily Value

Total Fat 4g	6%
Saturated Fat 1.5g	8%
<i>Trans Fat</i> 0g	
Cholesterol 20mg	7%
Sodium 580mg	25%
Total Carbohydrates 0g	0%
Dietary Fiber 0g	0%
Total Sugars 0.6g	
Includes 0g Added Sugar	0%
Protein 12g	
Vitamin D 0mcg	0%
Calcium 2mg	0%
Iron 0.3mg	2%
Potassium 210mg	6%

* The % Daily Value (DV) tells you how much a nutrient in a serving of food contributes to a daily diet. 2,000 calories a day is used for general nutrition advice.

[+] Certified to Step 1 standards of Global Animal Partnership's multi-tiered program by Earth Claims, LLC.